

**The Maxess Identity Management Module (IMM)** is a thin client application for both basic and advanced management of people, access permissions, credentials and badges. The IMM thin client application allows for a very rapid deployment of new installations as well as upgrades. It is an ideal solution where you need to incorporate remote sites with limited connectivity.

The IMM is written in .NET using Microsoft Silverlight technology. As such, our IMM module stands out from existing competitive offerings and provides the user with a richer multimedia experience.

In an access control system, the largest number of administrators and users are usually associated with the credentialing and badging process. It is typically the most time-intensive and, therefore, costliest part of the security operation. The IMM features have been designed to save both the end-user and the integrator time and money.

The IMM allows administrators to add, edit and delete people in the database as well as to add custom fields to allow the user to capture specific data about each cardholder. The data and permissions regarding the people contained in the database may be configured to start and/or expire on any date.

The IMM allows administrators to create an unlimited number of access levels. These access levels define which areas can be accessed and when the cardholder can access those areas. People may be issued permanent access levels or temporary access levels using an expiration date. Cardholders may also be given multiple access levels.

With the IMM, you can issue people multiple credentials; this is very useful in cases where multiple technologies, including biometric credentials, are required.

The IMM allows incorporating images such as pictures and signatures. Pictures may be derived from a file or captured by a network-connected webcam.

The IMM prints badges that are designed with the eAXcess/eFusion software. Badges may be printed using a network badge printer.

The IMM features widgets in the home page much like a dashboard that graphically informs the administrator about important conditions. An example would be a list of people whose permissions expired today or a list of people whose permissions will expire in one week or in one month. Widgets may also display a list of the people added today or the last area that cardholders accessed. Administrators may customize the widget to display any data from the database that they desire.

All IMM activity is logged for auditing purposes. Every event that is logged includes the date, time and operator that triggered the transaction.

Maxess uniquely combines thin clients and smart clients in our system design in order to best meet any customer requirement with the most efficient and secure offering in the industry.

# Identity Management Module (IMM)

## Overview

- **Designed with simplicity in mind**
- **Thoughtfully designed navigation makes it easy to get where you need to, when you need to.**
- **Deploy once, run anywhere Access Control.**
- **Designed using Microsoft Silverlight.**
- **Integrated Search**
- **Quickly find what you are looking for with the integrated search. It's always there to help you.**
- **Design once, run anywhere templates.**
- **Home page widgets for door unlocking/relocking, expired users and more**



# MAXXESS

MAXXESS Systems, Inc.

## Identity Management Module (IMM)

### System Requirements

#### Server:

- Windows Server 2008
- Internet Information Services 7
- Microsoft .NET Framework 4.0

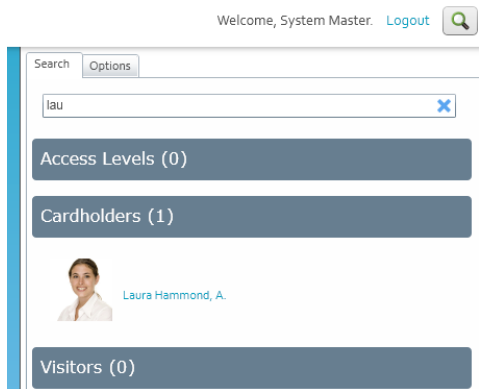
#### Client:

- 1GHz or Faster Processor with 1GB RAM and 100MB available HDD
- Microsoft Silverlight 4.0 supported Browser / Device
- Screen resolution of 1024x768 or greater for best experience

### Design once, run anywhere templates.

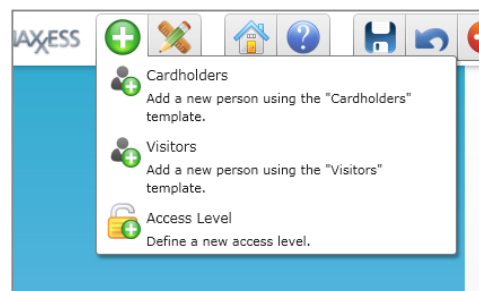


### Integrated Search



Quickly find what you are looking for with the integrated search. It's always there to help you.

### Easy to Use



Thoughtfully designed navigation makes it easy to get where you need to, when you need to.

#### Headquarters

1040 North Tustin Avenue  
Anaheim, CA USA  
92807

Tel 714 772 1000

800 842 0221

Fax 714 399 9358

Email sales@maxxess-systems.com

#### Service & Technical Support

Tel 714 772 1000

800 842 0221

Fax 714 399 9358

Email support@maxxess-systems.com

#### MAXXESS Systems Europe, Ltd.

##### Europe, Middle East, Africa

Doncastle House,  
Doncastle Road,  
Bracknell, Berkshire, UK  
RG12 8PE

Tel +44 (0) 1344 440083

Fax +44 (0) 1344 424658

Email sales@maxxess-systems.com

#### Service & Technical Support

Tel +44 (0) 8702 347654

Fax +44 (0) 8702 347655

Email support@maxxess-systems.com

[www.maxxess-systems.com](http://www.maxxess-systems.com)

Information furnished by MAXXESS is believed to be accurate and reliable. However, no responsibility is assumed by MAXXESS for its use nor for any infringements of patents or other rights of third parties that may result from its use. No license is granted by implication or otherwise under any patent rights of MAXXESS Systems, Inc. Specifications subject to change without notice.