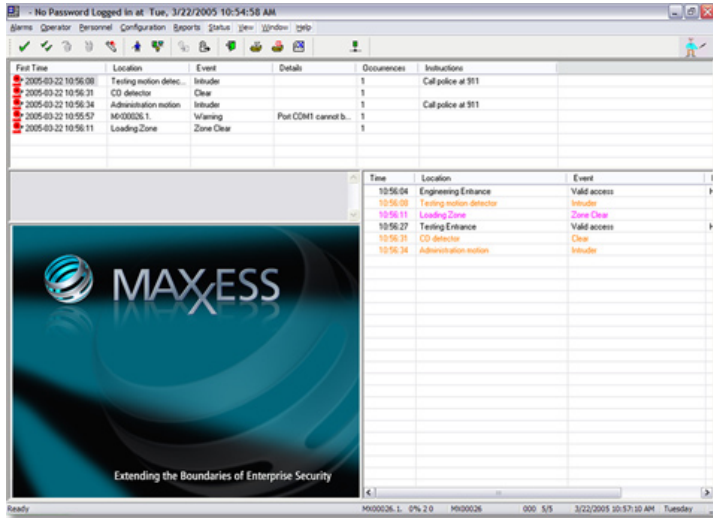




# MAXESS



## Complete Access Control Software Package

AXxess™ EXpress is a software package that provides multitasking support and flexibility. AXxess EXpress's open architecture enables you to build a new security management system or to integrate with existing card readers, and alarm monitoring devices.

The flexibility of AXxess EXpress gives you the power to customize your access control system to your specific needs — without requiring advanced technical expertise. Control access to individual buildings, offices or manufacturing areas, to single doors or multiple zones. Track visitor usage or employee attendance. Activate after-hour security.

## Flexible, Expandable and Reliable

AXxess EXpress features a distributed processing architecture that utilizes remote intelligent control. By localizing access decisions at the hardware level, AXxess EXpress provides the fastest possible processing times. This distributed processing scheme also provides maximum flexibility and the ability to add or delete access points without affecting overall system performance. Access decisions can be made accurately and without hesitation. Connections are made via standard data busses including your existing Ethernet backbone, RS-485, fiber or by using standard telephone dial-up .

## Applications

AXxess EXpress flexibility makes it ideal for a wide variety of applications such as office buildings, small commercial and manufacturing facilities.

# AXxess™ EXpress and AXxess™ Lite

## Security Management Software Packages

### AXxess Express

#### Standard Features

- For Windows® XP Pro
- Supports up to 30 doors (net series doors not included)
- Up to 5000 individual badge numbers
- Up to 100 access levels
- Single workstation (option to add more client licenses)
- Easy, cost-effective migration path to AXxess NS, eAXxess and eAXxess Limited
- Supports (5) eRAMs or RAMMs

#### Companion Products

- Barlock™ Processors 200 Series only
- Barlock™ Readers & Badges
- Input Module
- eRAMs
- Remote Access Memory Module (RAMM)

### AXxess Lite

#### Standard Features

- For Windows® XP Pro
- Supports up to 4 doors (net series doors not included)
- Up to 1000 individual badge numbers
- Up to 20 access levels
- Single workstation only
- Easy, cost-effective migration path to AXxess NS, eAXxess and eAXxess Limited

#### Companion Products

- Barlock™ Processors 200 Series only
- Barlock™ Readers & Badges
- Input Module

# AXxess™ EXpress Security Management Software

## Specifications

### SYSTEM REQUIREMENTS

#### BASIC COMPUTER REQUIREMENTS

- Pentium 4® 3.2 GHz or higher PC
- 1 GB RAM minimum
- 40 GB minimum hard disk
- Windows® XP Pro
- One or more serial ports for direct connect panels or RAMMs
- Ethernet card
- Parallel port or USB port for report printer
- CD ROM

Note: Computer requirements could change. Please contact factory for current requirements.

#### DATABASE INTERFACE

- SQL Server Database
  - Runtime version included

#### SYSTEM OPTIONS FOR EXPRESS ONLY

- Elevator module
- Badging module
- Data Encryption module
- Multiport™ Libraries
- Additional Client Licenses

### SYSTEM SPECIFICATIONS

#### SYSTEM COMPONENTS

- AXxess™ EXpress Software CD-ROM
- AXxess™ Interface Module
- RS-232 cable

#### COMMUNICATIONS

- 2-Wire, RS-485 interface
- RS-232
- Fiber w/purchase of appropriate Interface Module
- Ethernet

#### INSTALLATION

- LAN/WAN using EXpress with eRAM or RAMM
- Daisy chained RS-485 terminated with 120Ω resistors at ends

#### APPROVALS

UL, CSA, CE



# MAXxESS

MAXxess Systems, Inc.

#### Headquarters

1040 North Tustin Avenue  
Anaheim, CA USA  
92807

Tel 714 772 1000

800 842 0221

Fax 714 399 9358

Email sales@maxxess-systems.com

#### Service & Technical Support

Tel 714 772 1000

800 842 0221

Fax 714 399 9358

Email support@maxxess-systems.com

#### MAXxess Systems Europe, Ltd.

##### Europe, Middle East, Africa

Doncastle House,  
Doncastle Road,  
Bracknell, Berkshire, UK  
RG12 8PE

Tel +44 (0) 870 234 7654

Fax +44 (0) 870 234 7655

Email sales@maxxess-systems.com

#### Service & Technical Support

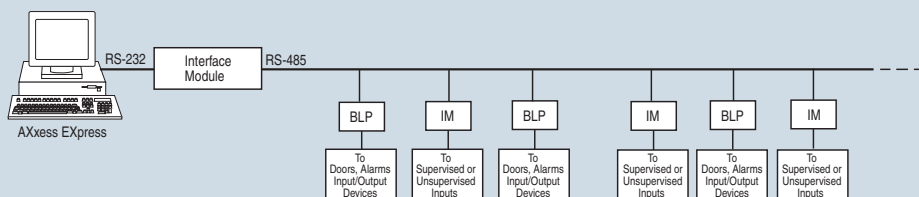
Tel +44 (0) 870 234 7654

Fax +44 (0) 870 234 7655

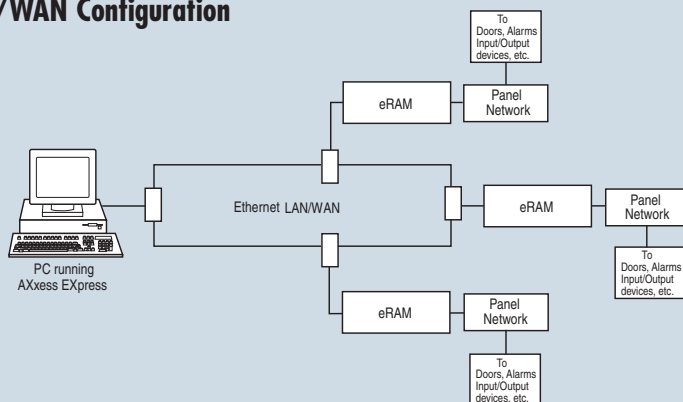
Email support@maxxess-systems.com

[www.maxxess-systems.com](http://www.maxxess-systems.com)

### BLP – RS-232/485 Configuration



### eRAM – LAN/WAN Configuration



Information furnished by MAXxess is believed to be accurate and reliable. However, no responsibility is assumed by MAXxess for its use nor for any infringements of patents or other rights of third parties that may result from its use. No license is granted by implication or otherwise under any patent rights of MAXxess Systems, Inc. Specifications subject to change without notice.

© 2008 MAXxess Systems, Inc., Anaheim, CA  
3552-EXP Rev. 8/08 Printed in USA