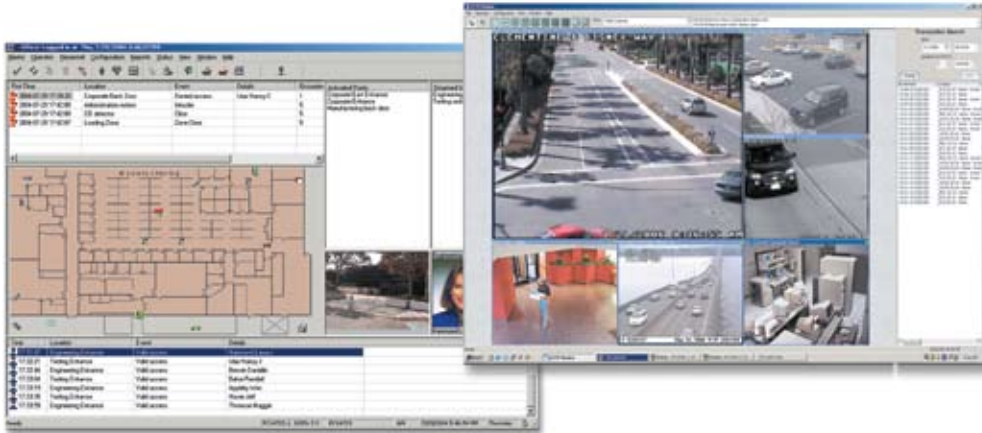




eAXxess™

## Event Management Software



### Complete Access Control Software Package

eAXxess™ is a powerful security management software package that provides multitasking support and flexibility. The open architecture enables you to build a security management system or to integrate with existing card readers and alarm monitoring devices. The features of eAXxess give you the power to customize your access control system to your specific needs — without requiring advanced technical expertise. This makes eAXxess ideal for a wide variety of applications such as multi-tenant office buildings, hospitals, government facilities, manufacturing facilities, airports and other security sensitive installations.

### ViewPoint™ Video Management

The open architecture ViewPoint™ module adds the capability to integrate various manufacturers' DVRs, IP cameras and video IP servers.\* Utilizing bi-directional communication to these devices, any pre-determined event can control, display, record and archive both video and text information. Pre-recorded video may be retrieved and viewed by simply selecting the transaction on the screen.

### Flexible, Expandable and Reliable

The eAXxess Security Management System features a distributed processing architecture that utilizes remote intelligent control. By localizing access decisions at the hardware level, eAXxess provides the fastest possible processing times. This distributed processing also provides maximum flexibility and the ability to add or delete access points without affecting overall system performance. Access decisions can be made accurately and without hesitation. Connections are made via standard data buses including IP, using your existing Ethernet backbone, fiber, or data buses including RS-485.

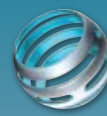
### WebPoint

eAXxess comes with WebPoint. It gives you the power to view alarms, control your card holder data base and run reports from anywhere in the world without the need to install additional software on your PC.

\* Features dependent on the individual DVR, NVR or IP camera

### Standard Features

- For Windows® 7, Vista and XP Pro
- Supports Most Major Controllers
- Supports Multiple Workstations
- Supports up to 128 doors
- Graphical Floor Plan Support
- Voice Annunciation with Action Messages on Alarm
- Email on Alarm or Designated System Event
- Includes Database Partitioning
- Includes 128 bit Data Encryption Module
- Strong Passwords
- Unlimited System Access Levels, Operators, Time Tasks, Time Zones
- Multi-Language Support
- Integrated Video Management Available
- Integrated Video Badging Available
- Global Input/Output Control
- Global Anti-Passback
- Elevator Floor Control Available
- Report Wizard for Customized Reports
- Video Cardholder Verification
- User Definable Templates and Badge Designs
- Programmable Logic Controllers
- Automatic Import/Export Available
- On-Site Time Available
- Windows® User Authentication



# MAXXESS

MAXXESS Systems, Inc.

## eAXxess™ Security Management Software

### Specifications

#### BASIC SERVER REQUIREMENTS

- Core™ 2 Duo or better
- 2 GB RAM minimum
- 300 GB minimum hard disk
- Windows 7, Vista and XP Pro
- Ethernet card
- CD/DVD

Note: Computer requirements could change. Please contact factory for current requirements.

#### DATABASE INTERFACE

- Microsoft SQL Server 2000, 2005 or 2008
- Limited runtime version included for SQL 2005

#### SYSTEM OPTIONS

- Up to 5 concurrent users
- Elevator module
- Badging module
- ViewPoint™ module
- Automatic Import/Export
- On-Site Time module

#### SYSTEM SPECIFICATIONS

##### COMMUNICATIONS

- TCP/IP

##### INSTALLATION

- LAN/WAN using eMAX Controllers

##### APPROVALS

UL, CE, FCC

#### Headquarters

1040 North Tustin Avenue  
Anaheim, CA USA  
92807

Tel 714 772 1000  
800 842 0221

Fax 714 399 9358  
Email sales@maxxess-systems.com

#### Service & Technical Support

Tel 714 772 1000  
800 842 0221

Fax 714 399 9358  
Email support@maxxess-systems.com

#### MAXXESS Systems Europe, Ltd.

##### Europe, Middle East, Africa

Doncastle House,  
Doncastle Road,  
Bracknell, Berkshire, UK  
RG12 8PE

Tel +44 (0) 870 234 7654

Fax +44 (0) 870 234 7655

Email sales@maxxess-systems.com

#### Service & Technical Support

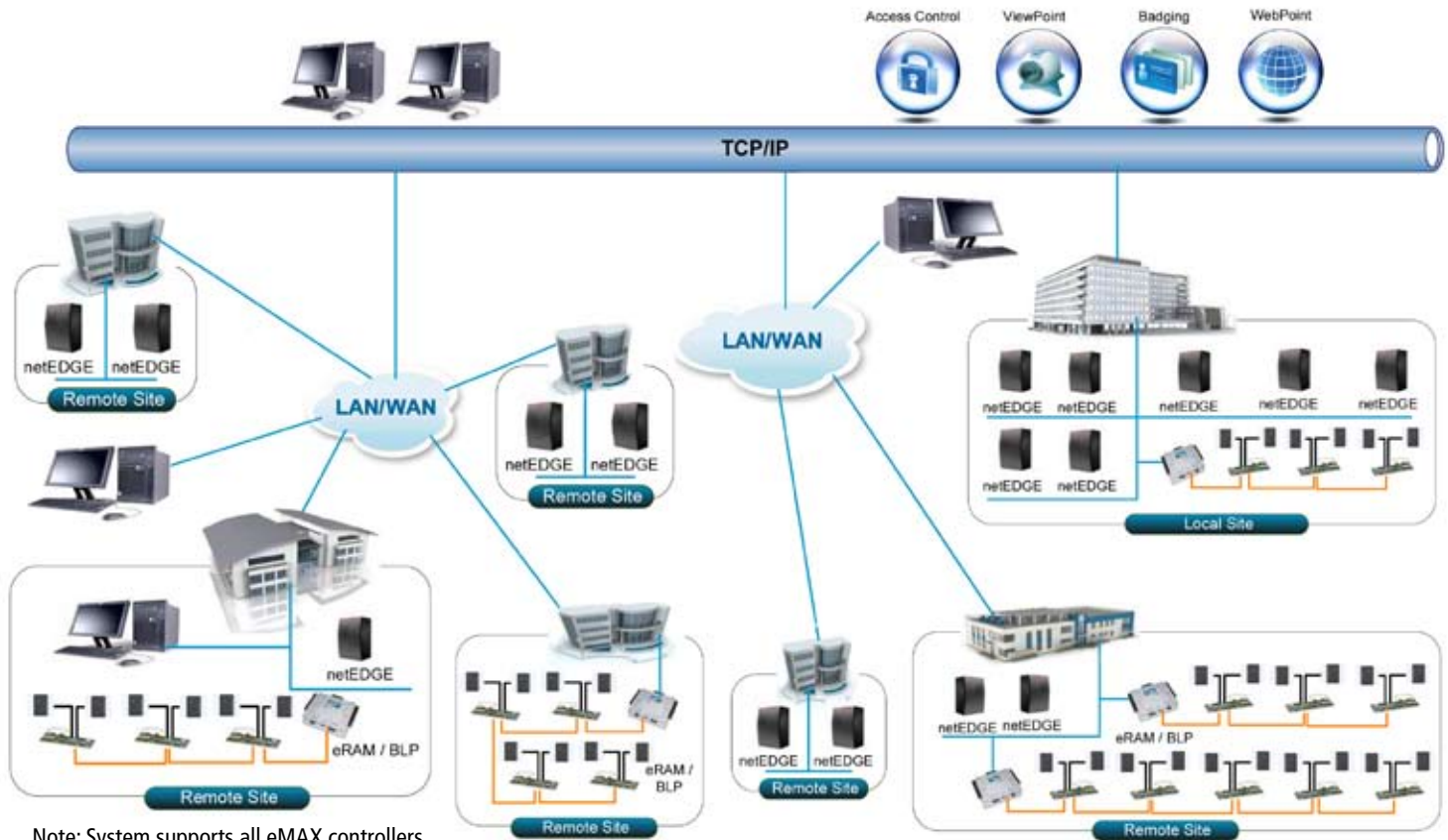
Tel +44 (0) 870 234 7654

Fax +44 (0) 870 234 7655

Email support@maxxess-systems.com

[www.maxxess-systems.com](http://www.maxxess-systems.com)

### eAXxess Schematic



Note: System supports all eMAX controllers