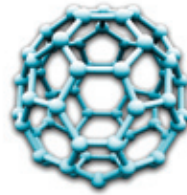




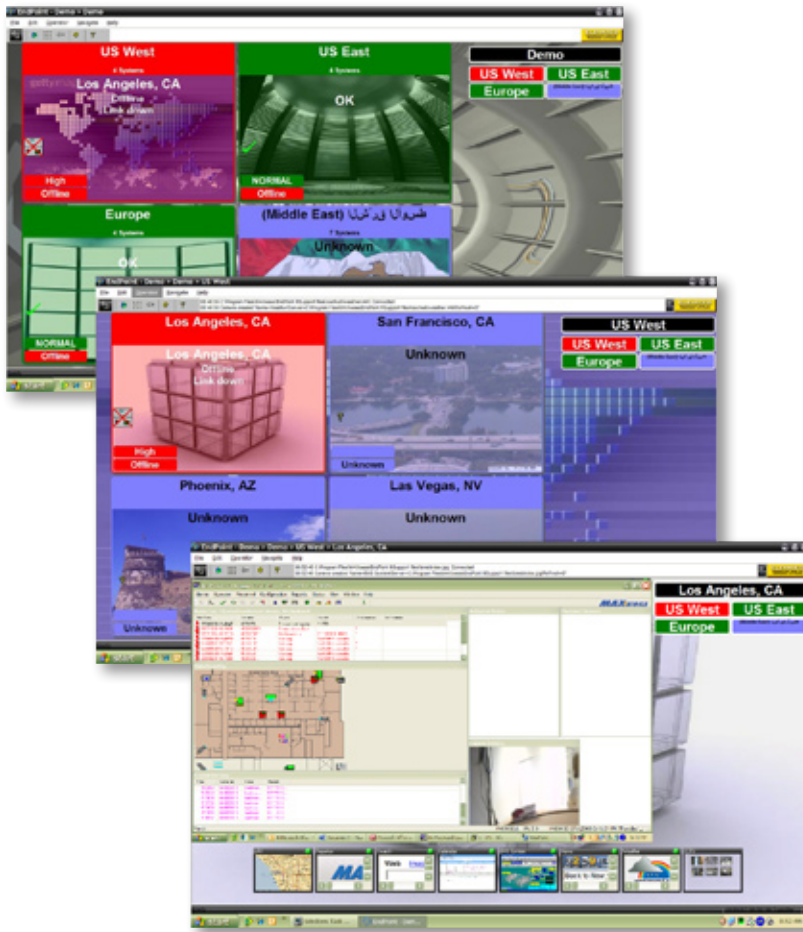
MAXXESS



EndPoint™ adaptive Information Framework

Features

- Displays real-time information from multiple sources
- Incorporates essential external information
- Filters unnecessary information
- Provides intuitive operational interface
- Permits multiple levels of users
- Enables remote site monitoring and management
- Fits current needs without sacrificing growth options
- Includes high-level virtualized alarms
- Adapts to specific user environment
- Ensures rapid, cost effective deployment
- Integrates with legacy systems
- Utilizes existing IP infrastructure
- Accommodates network security
- Improves personnel efficiency



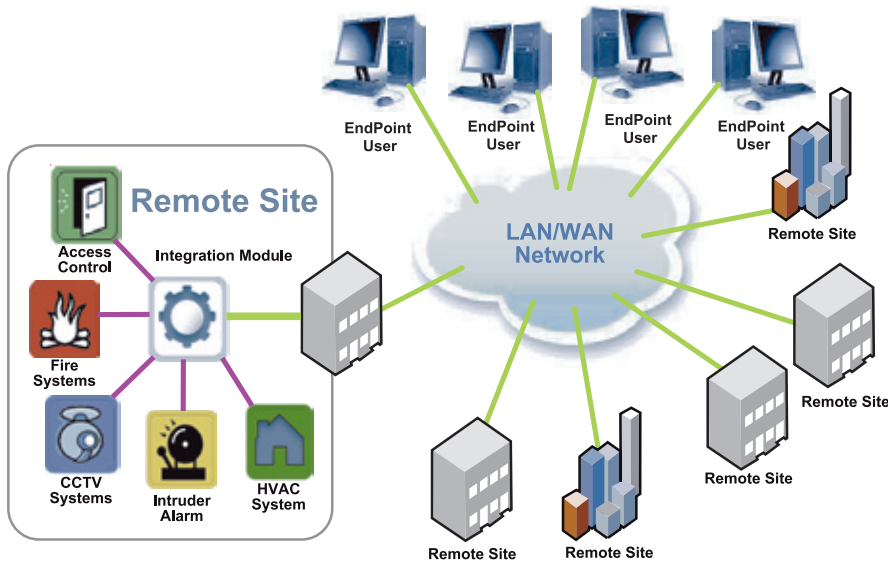
Manage Time Critical Information on One Screen

EndPoint™ adaptive is a truly unique and revolutionary software framework that enhances the interface to multiple industry-specific systems and information sources. It also integrates non-traditional data sources such as live news feeds. EndPoint delivers time critical information to one screen.

The effective management of disparate information is an increasingly important and a complex process. EndPoint utilizes unique data and video interfaces developed by MAXXESS, an innovative technology solution that effectively combines rules-based information architecture with an assembly engine that pulls together disparate content assets from multiple sources and unifies them into a rich visual environment that leverages existing IT infrastructure and systems. All visual environments contain actionable content cells that can be dynamically rearranged based on user preference or external triggers—highly effective at supporting high-level human decision-making.

EndPoint users are equipped to manage multiple remote sites with multiple systems over a LAN/WAN network. Information is viewed on multiple levels. A global view shows real-time security status of all locations in all regions. A regional view shows status by facility and a site view allows control of individual facility systems. All of this on one screen.





Headquarters

1040 North Tustin Avenue
Anaheim, CA USA
92807

Tel 714 772 1000
800 842 0221
Fax 714 399 9358
Email sales@maxxess-systems.com

Service & Technical Support

Tel 714 772 1000
800 842 0221
Fax 714 399 9358
Email support@maxxess-systems.com

MAXXESS Systems Europe, Ltd.

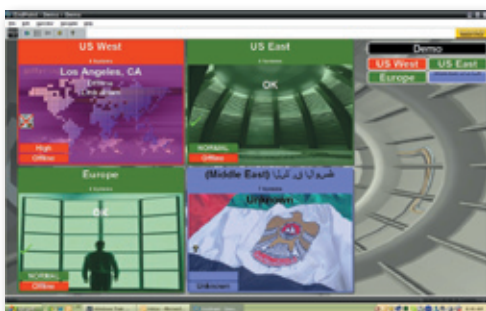
Europe, Middle East, Africa

200 Brook Drive,
Green Park, Reading,
Berkshire, RG2 6UB
United Kingdom

Tel +44 (0) 1344 440083
Fax +44 (0) 1344 325050
Email sales@maxxess-systems.com

www.maxxess-systems.com

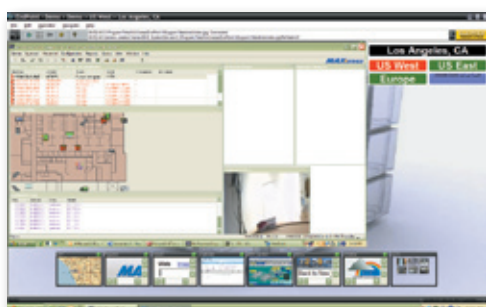
Views



Global View—Top level status overview of all regions



Regional View—Status of locations within the region



Local View—Status of systems within a location

COMPUTER REQUIREMENTS

- Processor
 - Xeon™ or Pentium™ 4 Processor
 - 3.0GHz or higher clock speed
 - Hyper-Threading enabled
- OS: Windows® Server
- RAM: Minimum 2 GB
- Disk: Minimum 80 GB
- Graphics: 256 MB graphics card
- User Interface: keyboard & mouse
- Display: 17" flat panel
- Audio: sound card & Windows Media Player
- I/O: Ethernet + USB

ENDPOINT ADAPTIVE SOFTWARE COMPONENTS

7400-400 EndPoint adaptive Software License

- 1 client, 10 site views
- Upgrade to max 625 site views

7400-410 EndPoint adaptive additional Client License

7400-420 EndPoint adaptive additional SiteView

- Up to 10 VIC cells per view
- Up to 16 video inputs in system cell
- 9 other source cells

7400-430 EndPoint adaptive Custom Integration

- Collect & monitor from 3rd party hardware, then trigger events based on data

7400-440 EndPoint adaptive Data Source Module

- Provides Data Collection tool

Information furnished by MAXXESS is believed to be accurate and reliable. However, no responsibility is assumed by MAXXESS for its use nor for any infringements of patents or other rights of third parties that may result from its use. No license is granted by implication or otherwise under any patent rights of MAXXESS Systems, Inc. Specifications subject to change without notice.